



GLORYPCB ELECTRONIC CO., LTD

Meet The Customers Requirements
With Premium Quality



CONTENT



Part 1 Company Introduction

Brief Introduction
Company Development
Company Organization



Part 2 Our Products and Marketing

Product Introduction
Competitive Advantage
Manufacturing Capability
Marketing Condition



Part 3 Product Quality Guarantee

Product Certification
Producing Process
Producing Equipment
Typical product Show



Company Brief Introduction

Basic Facts

Date Of
Establishment

2008.10.01

Building Area

20000 m²

Staff Member

600

Manufacture
Capability

250,000 m²

Main Products

PCB/FPC

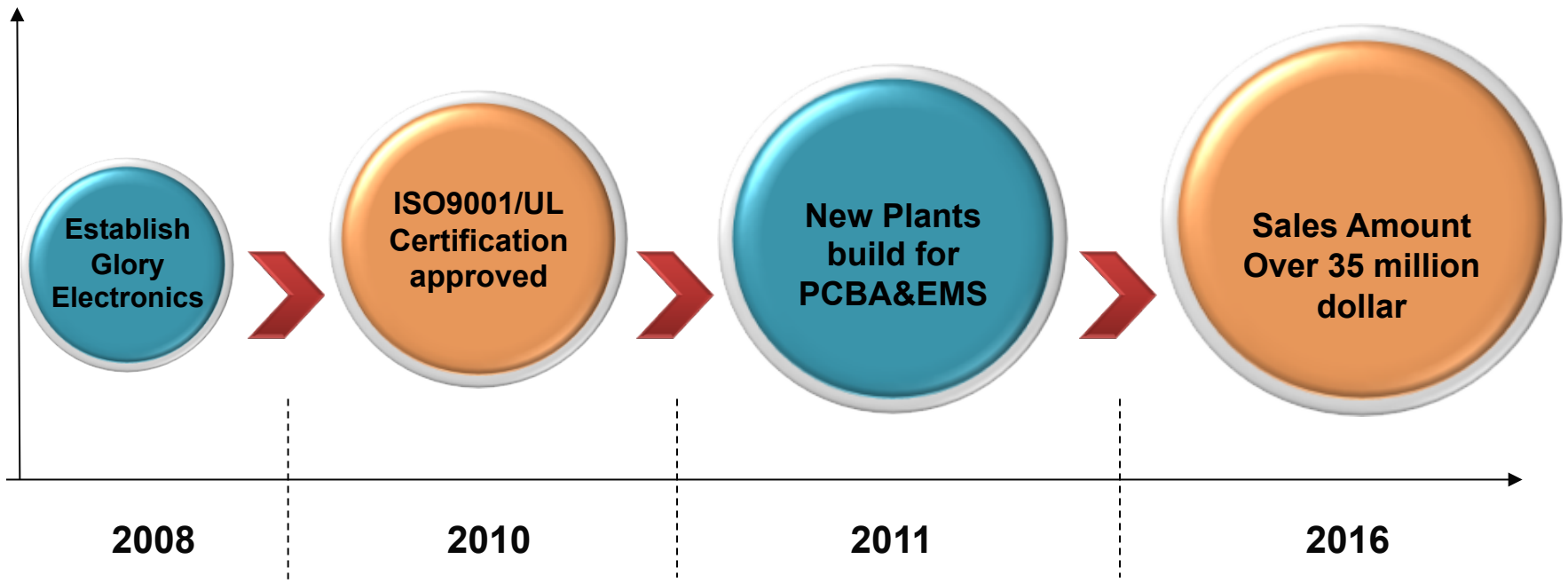
PCBA

EMS



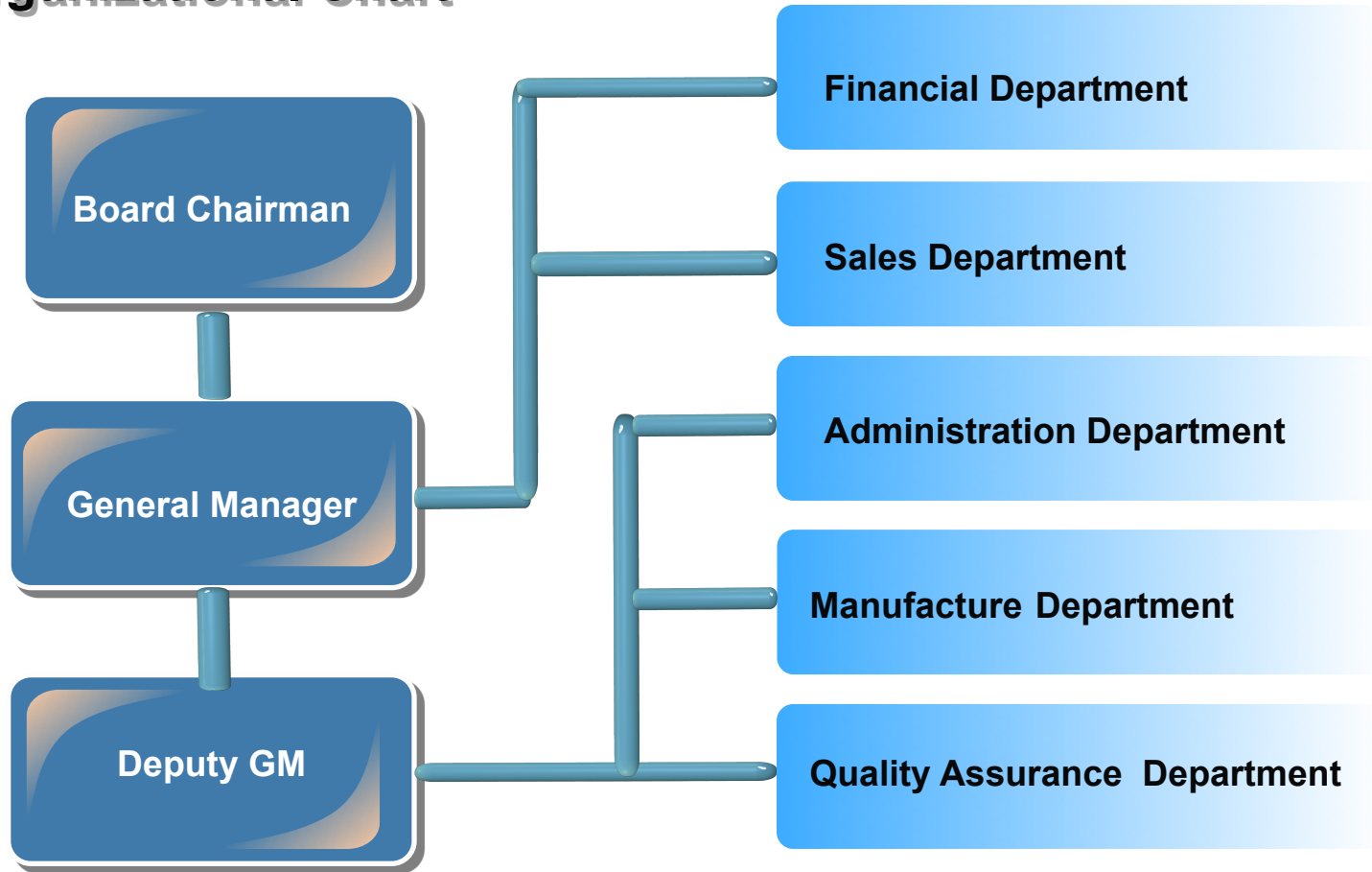
Company Development

Overview



Company Organization

Organizational Chart



Competitive Advantages

- **Constituted by skilled & experienced specialist on PCB / Electronics Manufacturing;Engineering;Quality Assurance & Marketing.**
- **Best Service from our plant; Can get competitived price;Better quality;Actives Service.**
- **Just-in-time programs provide considerable savings and guarantee the delivery of speedy services;**
- **Design For Manufacturability (DFM) programs ensure optimum efficiency based on our professional engineer.**
- **One-Stop-Shopping solution for your total PCB &PCBA Demand.**



Manufacture Capability

Layer Counts	2--48
Material	Polymide, FR-4, High TG FR-4, PTFE, Aluminum Base, Cu base. Rogers, etc
Maximum Size	700mm X 1000mm
Board Outline Tolerance	±0.10mm
Board Thickness	0.20mm--8.00mm
Thickness Tolerance(t ≥ 0.8mm)	±8%
Thickness Tolerance(t < 0.8mm)	±10%
Insulation Layer Thickness	0.075mm--5.00mm
Minimum Line	0.065mm
Minimum Space	0.065mm
Out Layer Copper Thickness	18um--350um
Inner Layer Copper Thickness	17um--175um
Drilling Hole (Mechanical)	0.15mm--6.35mm
Finish Hole (Mechanical)	0.10mm--6.30mm
Diameter Tolerance (Mechanical)	0.05mm
Registration (Mechanical)	0.075mm
Aspect Ratio	16:1
Solder Mask Type	LPI
SMT Mini. Solder Mask Width	0.075mm
Mini. Solder Mask Clearance	0.05mm
Plug Hole Diameter	0.25mm--0.60mm
Impedance Control Tolerance	±10%
Surface Finish	HASL, ENIG, Chem. Tin, Flash Gold, OSP, Gold finger



Fast Response Service

Category	Quickest Lead Time	Normal Lead Time
Double sides	24hrs	120hrs
4 layers	48hrs	172hrs
6 layers	72hrs	192hrs
8 layers	96hrs	216hrs
10 layers	120hrs	288hrs
12 layers	144hrs	288hrs
14 layers	168hrs	312hrs
16-20 layers	Depends on the specific requirements	
Above 20 layers	Depends on the specific requirements	





Major Customer Partner



EMERSON

COMMScope®



BOSCH

alhua



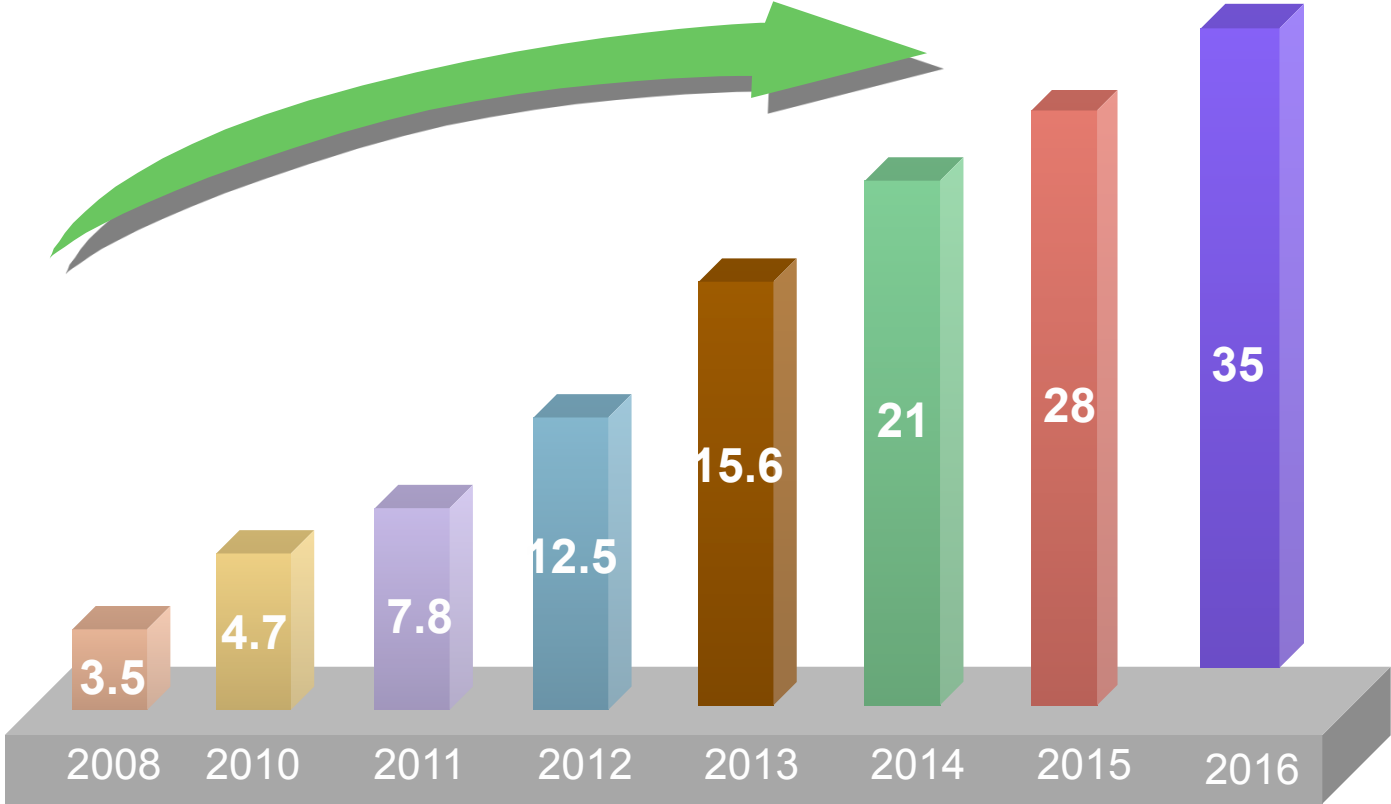
cobra

power-one®



Annual Marketing Turnover

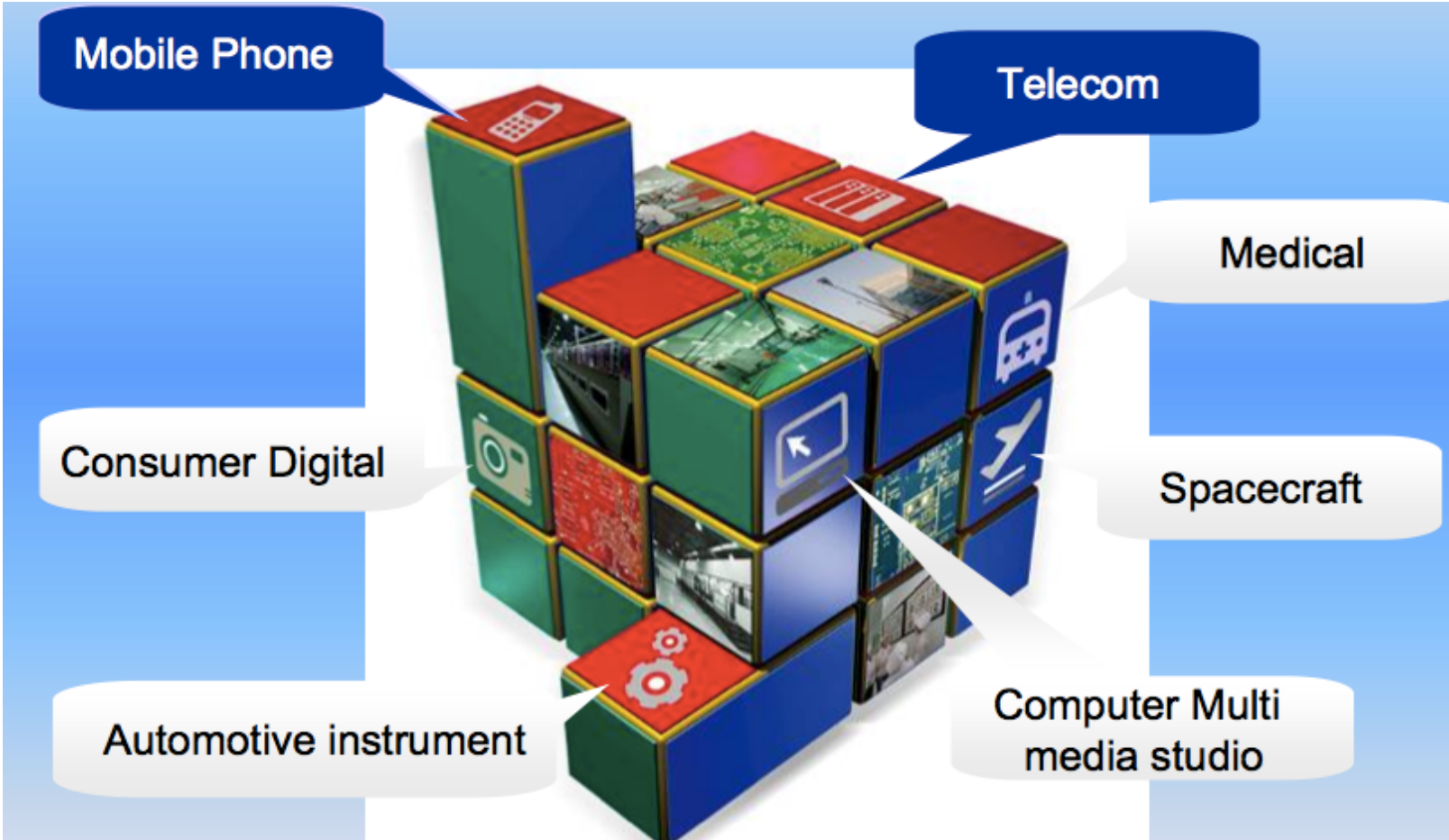
Sales Amount



Unit: million dollar



Product Application



Quality System Certification



ISO9001




**Quality
management system**




ISO14001



**Environmental
managementsystem**



E257384



UL Attestation



Quality System Certification

Quality Goal

98%
Rolled Yield

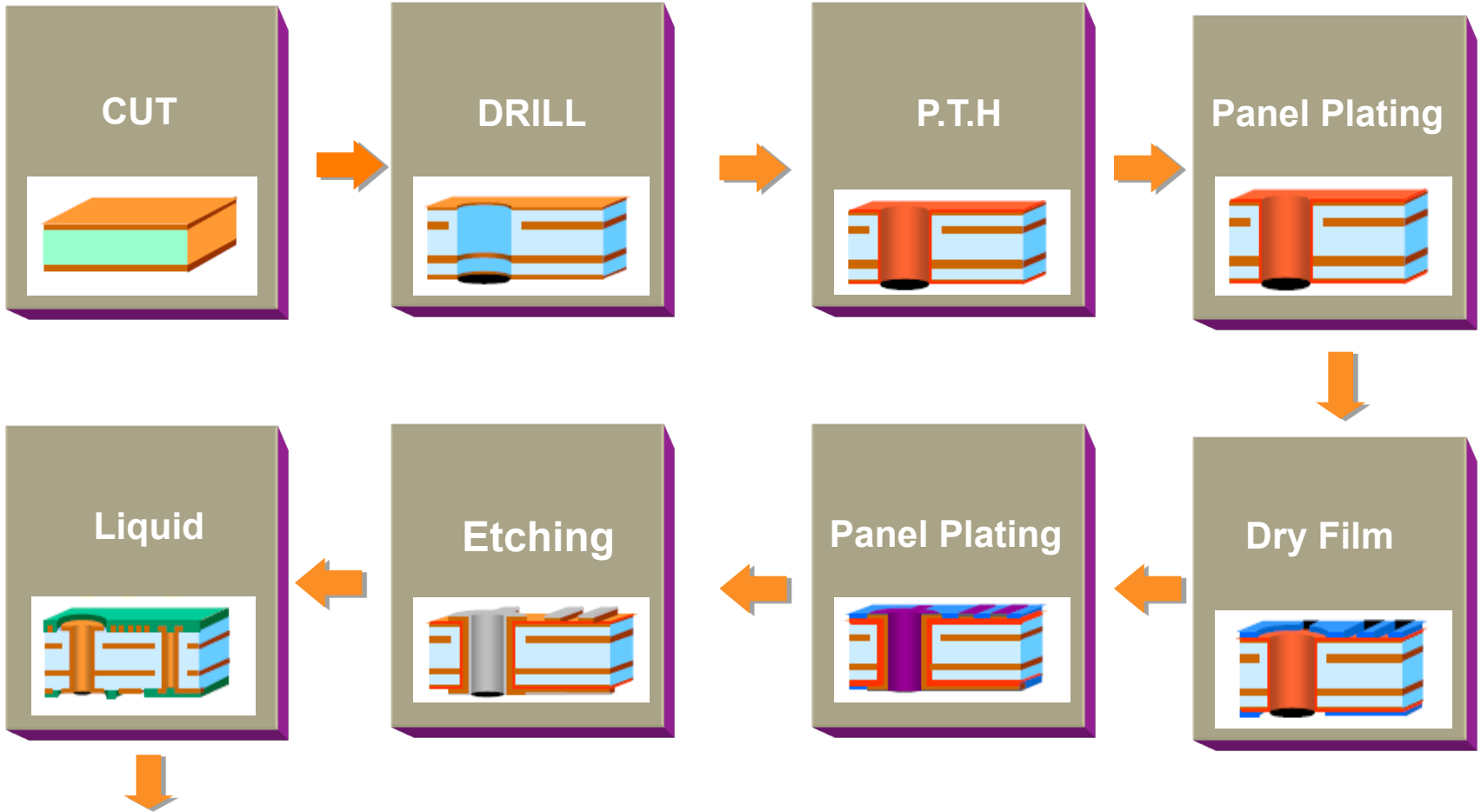
95%
Customer
Satisfaction

98%
Perfect Order
Rate

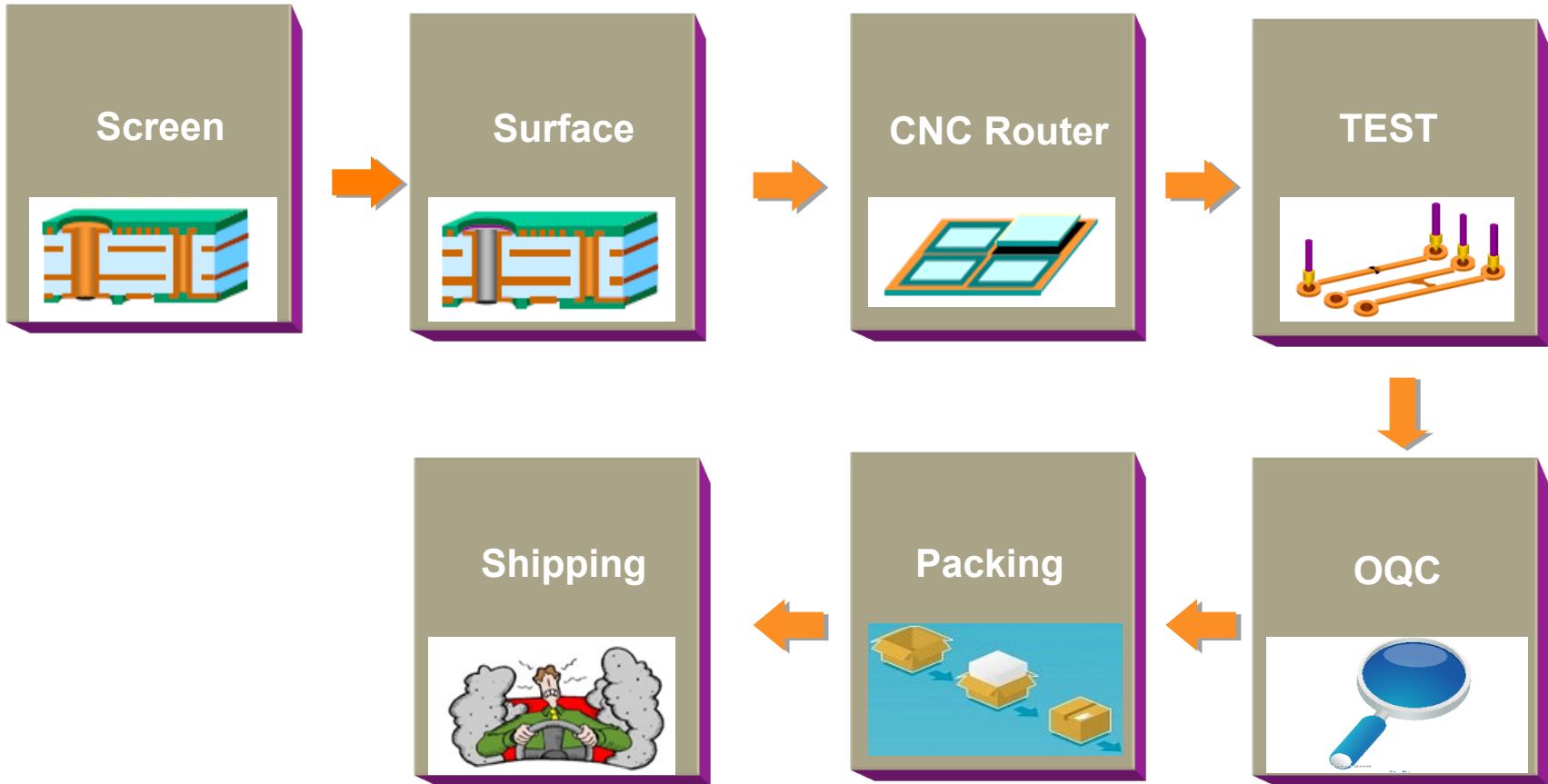
Always Endeavoring To Do Still Better,
Shaping Fine Quality, Continuous
Improvement, Customers And Society.

Quality Principles

Production Process



Production Process



Equipment List

	Configuration	Brand
Laminate	Pressing Machines *1	Tai Wan VIGOR
Drill	Drilling Machine *4	Tai Wan Tong Tai
P.T.H	Auto Line *1	Chang Zhou LIDA
Panel Plating	Auto Line *1	Chang Zhou LIDA
Dry Film	Imagine Machine *1	Tai Wan CSun



Equipment List

	Configuration	Brand
Panel Plating	Auto Line *1	Chang Zhou LIDA
Etching	Auto Line *1	Rong Hua KC
Sold Mask	Printing Machine *2	Tai Wan ATMA
Sold Mask	Imagine Machine *1	Tai Wan CSun
Developing Machine	Auto Line *1	Rong Hua KC



Equipment List

	Configuration	Brand
Cleaning Line	1Auto Line *1	Rong Hua KC
Silk Screen	Printing Machine *3	Tai Wan ATMA
Oven	Oven *4	Tai Wan CSun
CNC Router	Drilling Machine *5	Tai Wan Tong Tai
Tester	O/S Test *3	Tai Wan JIYU



Equipment List

	Configuration	Brand
automatic Scraping tin machine Line	1Auto Line *3	Rong Hua KC
SMT machine	Chip Mounter *6	Panasonic/SONY/JUKI
Reflow Soldering Machine	Reflow Soldering *2	Tai Wan CSun
AOI Detection Machine	DetectionMachine*1	Tai Wan Tong Tai



Production line



Drill



Silk Screen



Developing



Laminate



X-Ray



AOI



Production line



Automatic Scraping tin machine



Panasonic Chip Mounter



SONY Chip Mounter



JUKI Chip Mounter



Reflow Soldering Machine



AOI Detection Machine



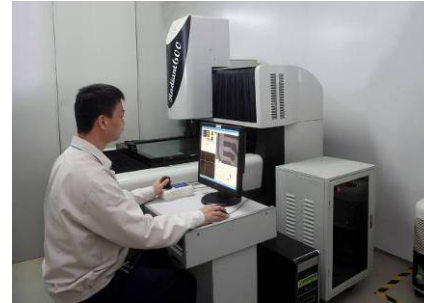
Reliability Testing Equipment



impedance tester



Ionic contamination tester



2D Measuring Projector



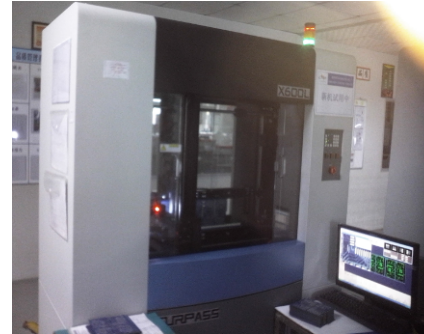
Peel Strength tester



X-RAY Gold thickness tester



Insulation Resistance Tester



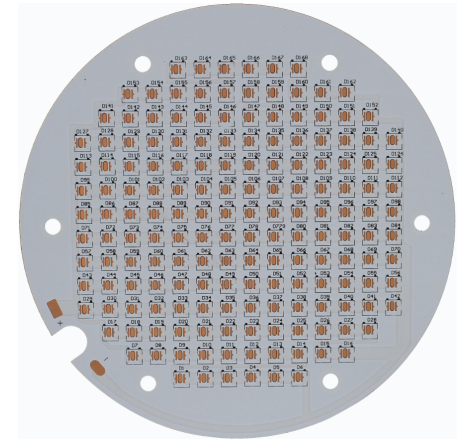
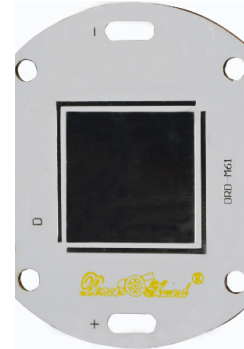
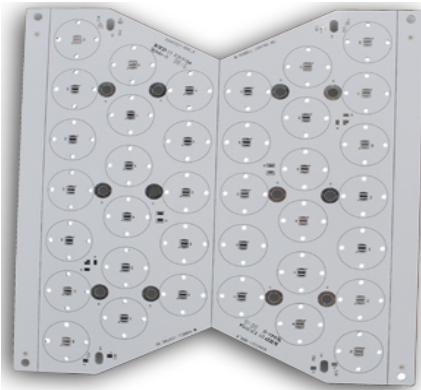
Flying Probe tester



Metallurgical Microscopy



Typical Product 1

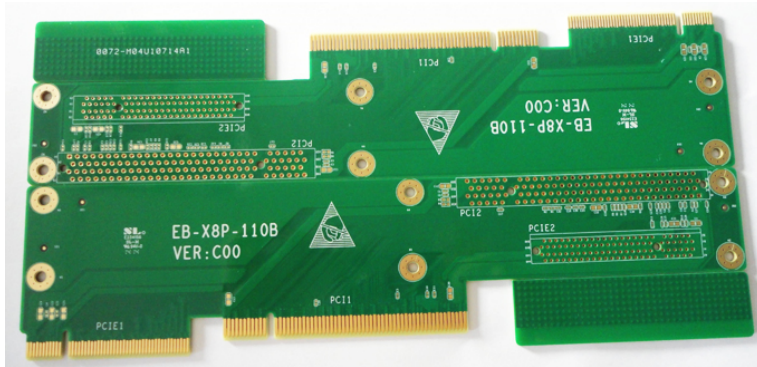


- ❖ **Material: Aluminum Based (Ventec VT-4A2)**
- ❖ **Board Thickness: 1.6 mm**
- ❖ **Copper thickness: 1 oz**
- ❖ **Ink: TAIYO INK**
- ❖ **Thermal Conductivity: 2.0W/m*k**
- ❖ **Surface finish: HASL lead free**
- ❖ **Molding: Routing, Punching**

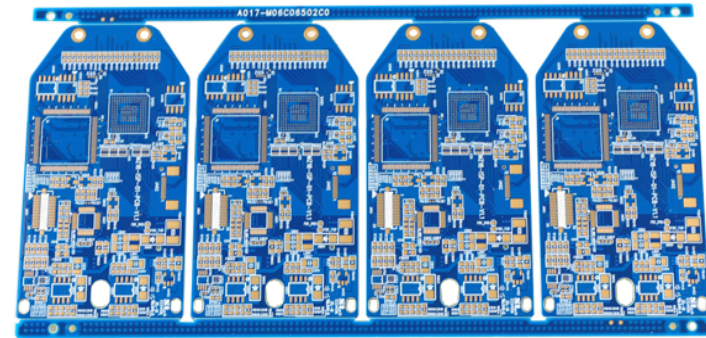
- ❖ **Material: Copper Based**
- ❖ **Board Thickness: 1.6 mm**
- ❖ **Copper Thickness: 2 OZ**
- ❖ **Ink: LB-White INK**
- ❖ **Thermal Conductivity: 3.0W/k.m**
- ❖ **Surface finishing: OSP**
- ❖ **Molding: Routing, Punching**



Typical Product 2



- ❖ Material: ShengYi (S1000-2)
- ❖ Board Thickness: 1.6 mm+/- 0.1mm
- ❖ Copper Thickness: 10Z
- ❖ Layer: 4 Layers
- ❖ Solder Impedance Tolerance: +/-8%
- ❖ Surface finishing: Immersion Gold
- ❖ Gold Finger Thickness: Min 30 u"



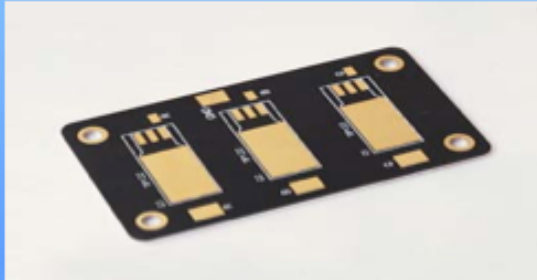
- ❖ Material: ShengYi (S1000-2)
- ❖ Board Thickness: 1.2 mm+/- 0.1mm
- ❖ Copper Thickness: 10Z
- ❖ Min Hole Size: 0.25mm
- ❖ Min Traces Width: 0.075mm
- ❖ Surface finishing: Immersion Gold
- ❖ Gold Thickness: 1-2 u"





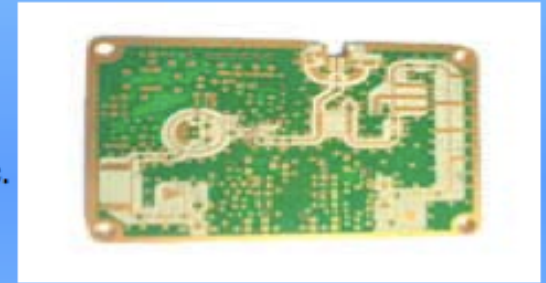
Typical Product 3

Characteristic:
AL-base



Application:
Power supply, Power amplifier, relay, LED, etc

Characteristic:
8 layer blind / buried via PCB, PTFE-FR4 mixed



Application:
Power amplifier etc.

Characteristic:
6-12 layer blind / buried via PCB, thickness 5mm



Application:
Secondary power source etc.

Characteristic:
16 layer impedance control PCB

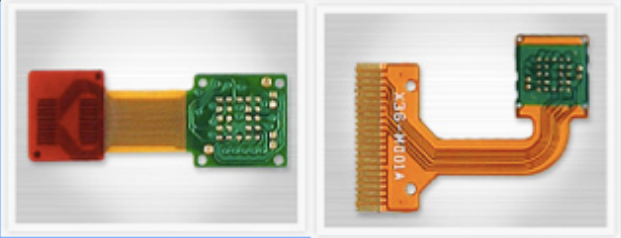

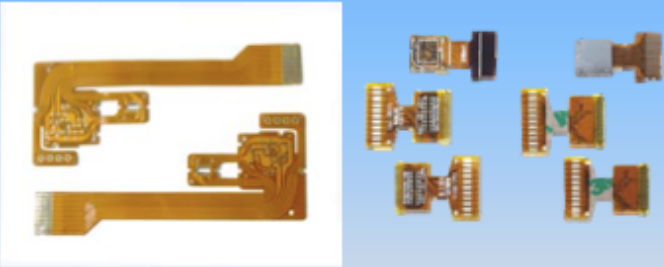
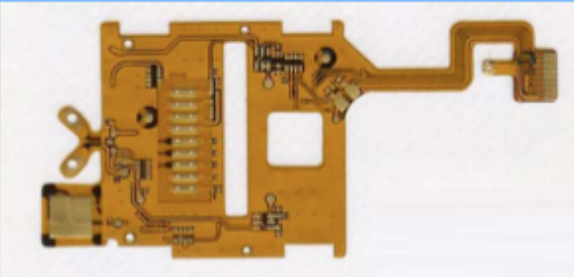


Application:
Telecommunication, Network, Medical equipment etc.

Special material product



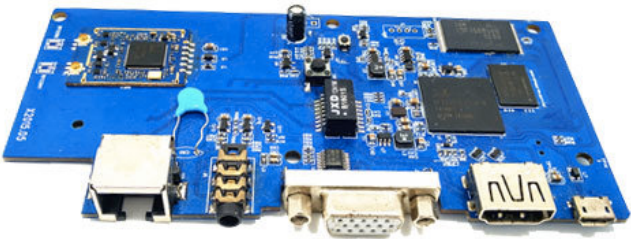
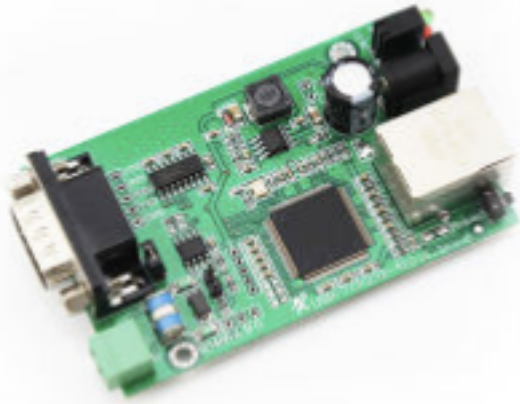
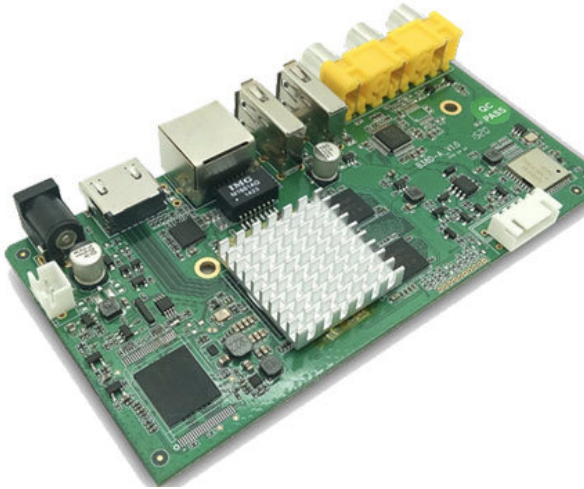
Typical Product 4

<p>Characteristic: Rigid-Flex PCB</p>  <p>Application: Mobile, Notebook, LCM,IT etc</p>	<p>Characteristic:</p>  <p>Application: Mobile, Note</p>
<p>Characteristic:</p>  <p>Application: Mobile, Notebook, LCM,IT etc</p>	<p>Characteristic:</p>  <p>Application: Mobile, Notebook, LCM,IT etc</p>

FPC Product



Typical Product 5



PCBA Product



Typical Product 6



Main Finished Products



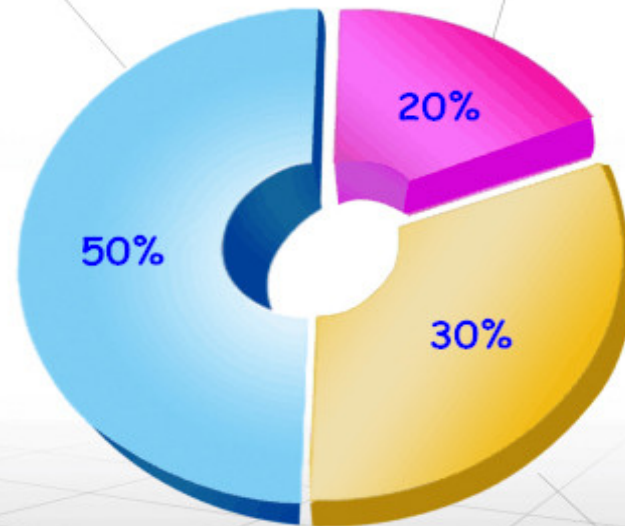
Main Market

Sales distribution ↗



Overseas markets
(Europe and America)

East market



South china market





ENVIRONMENT PROTECTION

“Green” Company:

Our Plant have invested huge money for the waste water and exhaust gas process to reduce the pollutant emission, Through survey and investigation, we decided to adopt environment friendly and energy-efficient technologies and techniques to our plants.

The above mentioned, the application of technologies and techniques as described below indicates that GP indeed assumed its social responsibility of environment protection, by green production and reducing pollution and carbon emission.





GLORYPCB ELECTRONIC CO., LTD

Sales@glorypcb.com www.glorypcb.com

Tel: 86 (0) 755-27806507 Fax: 86 (0)755-27806508

Thank You !

